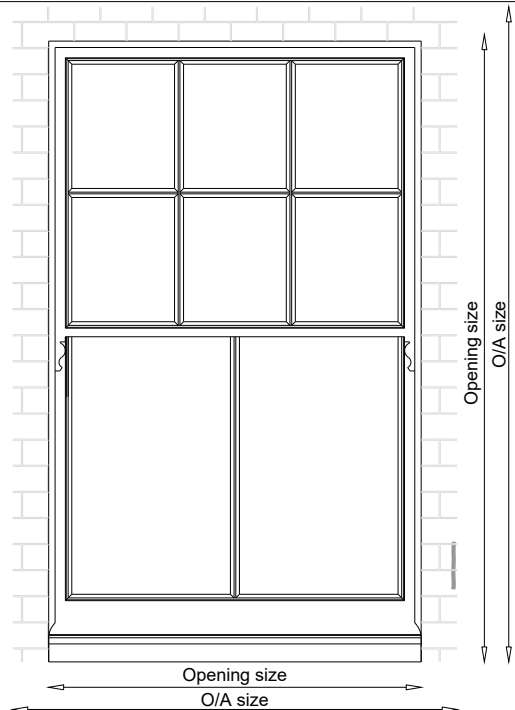


Traditional Range: Sliding Box Sash Window - 144mm with Timbalite units

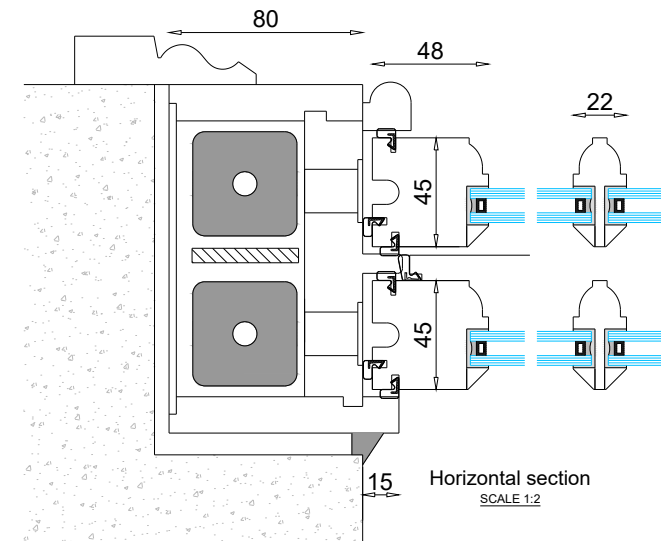
Example window layout, 6 over 2 panes.

Available in all glazing bar configurations or without glazing bars.

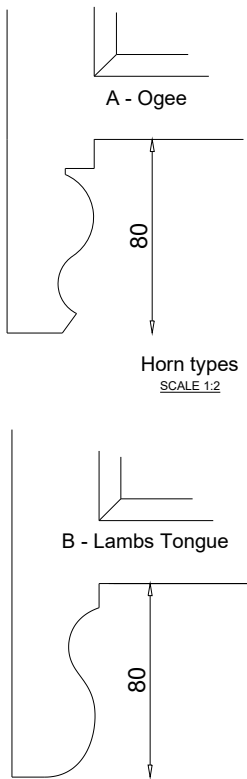
Ovolo, lambs tongue moulds available.



Elevation view from outside

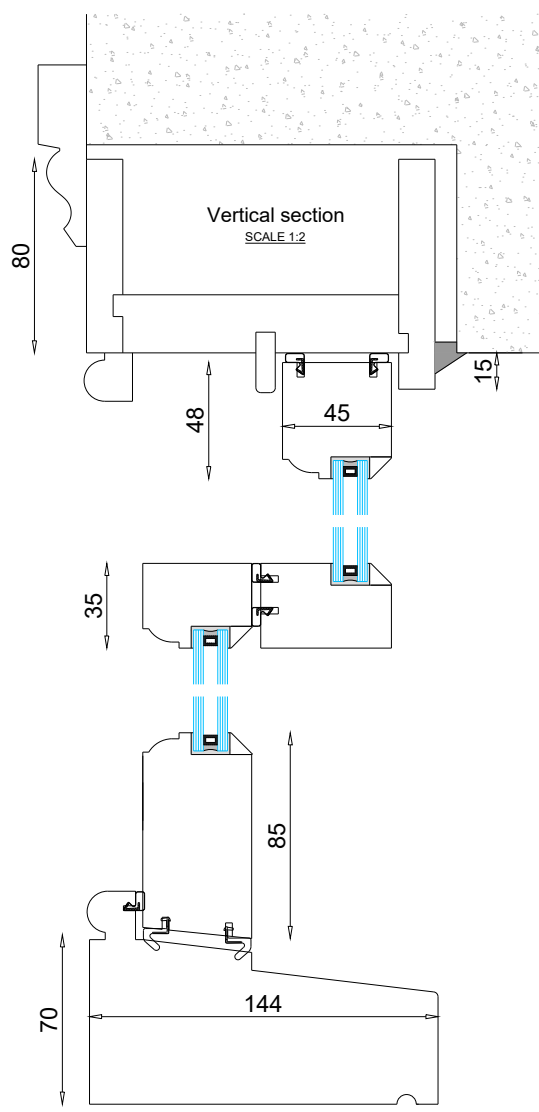


Horizontal section
SCALE 1:2



Horn types
SCALE 1:2

Standard horn types available as above. With or without horns to top / bottom sashes. Bespoke options also available.



Vertical section
SCALE 1:2

- General notes
1. Windows to be glazed with clear Timbalite 4/6/4 or 4/4/4 low E krypton filled double glazed units with choice of black, white spacer bars. Large choice of glass types available. Glazing units can be putty faced or timber beaded.
 2. Can be supplied with toughened or laminated glass as required.
 3. Timber to be Accoya/Hardwood
 4. All windows to be fully weather stripped with schlegel aquamac compression seals.
 5. Windows to be fitted with counter balance weights.
 6. Ironmongery to include 4 x bearing type sash pulleys - 2 x sash lifts - 1 x fitch catch (2 no to wider windows); colour/finish - choice of satin chrome, polished chrome or polished brass.
 7. Security - 2 no security sash stop locks to each set of opening sashes.
 8. Paint finish: white as standard - 4 stage process, factory spray applied microporous paint. Choice of colour, dual colour, colour match or stain.

Scale	1:2 @ A3	Drawing No.	Example
Date		Rev/Issue	1
Dimension	mm	Design by	

Project Name:
Traditional Range with Timbalite Sliding Box Sash Window - 144mm Example



Copyright - Timbewood Direct Ltd. All designs and drawings are the intellectual property of Timbewood Direct Ltd and must not be used or copied without the permission of Timbewood Direct Ltd.